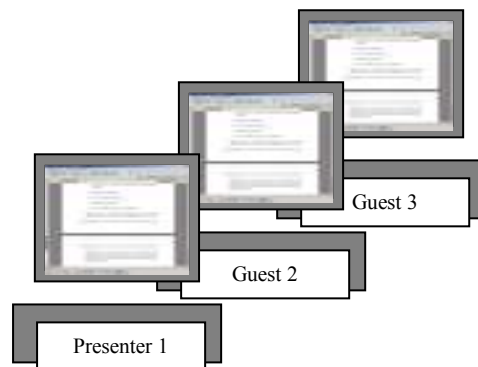


# ***Able ScreenSee***

## ***User Manual - Version 1.24***



## **CONTENTS**

<b>1</b>	<b>SYSTEM DESCRIPTION .....</b>	<b>3</b>
1.1	BENEFITS OF SCREENSEE.....	3
1.2	FEATURES OF SCREENSEE.....	3
1.3	APPLICATIONS FOR SCREENSEE .....	4
<b>2</b>	<b>INSTALLING SCREENSEE .....</b>	<b>6</b>
<b>3</b>	<b>RUNNING A SCREEN SHOW.....</b>	<b>11</b>
3.1	SETTING UP THE SHOW – PRESENTER ACTION.....	11
<b>4</b>	<b>JOINING A SHOW .....</b>	<b>13</b>
4.1	EMAIL OPTION .....	13
4.2	WEBSITE OPTION .....	14
<b>5</b>	<b>SAMPLE SCREEN SHOW .....</b>	<b>15</b>
<b>6</b>	<b>USING SCREENSEE.....</b>	<b>15</b>
6.1	SEND DESKTOP TO SITE .....	16
6.2	MODE .....	16
6.3	DISABLE SHOW .....	17
6.4	SHOW SETUP .....	18
6.4.1	<i>Client Information .....</i>	<i>18</i>
6.4.2	<i>Show Setup.....</i>	<i>18</i>
6.4.3	<i>Root File Name.....</i>	<i>19</i>
6.4.4	<i>Capture area.....</i>	<i>19</i>
6.4.5	<i>Check Boxes.....</i>	<i>19</i>
6.5	WEB SITE SETUP .....	19
6.5.1	<i>Compression Quality .....</i>	<i>21</i>
6.5.2	<i>Browser Refresh Time.....</i>	<i>21</i>
6.5.3	<i>Image File type .....</i>	<i>21</i>
6.5.4	<i>ScreenSee Site Address .....</i>	<i>21</i>
6.5.5	<i>Proxy Server Setup .....</i>	<i>21</i>
6.5.6	<i>Timeout .....</i>	<i>21</i>
6.6	SET UP EMAIL ADDRESSES.....	22

## **1 SYSTEM DESCRIPTION**

Able Technologies have launched their new screen sharing product, ScreenSee. This product allows the sharing of the host desktop with multiple users in multiple locations. It is facilitated via the Internet to allow one or more logged in users in a community to view a remote desktop.

One user is designated as the moderator of the screen show and the moderator sets up the show giving members of his community access to the show.

Two versions have been released –

1. The Single User Version that can be installed on a single machine and is available as a Free Trial.
2. The Professional Version that allows multiple hosts to use the product.

ScreenSee is easy to use and all that is required for members of a community is access to the Internet via a browser.

ScreenSee takes a snapshot of the user's PC screen and allows multiple guests, in multiple locations, to view it simultaneously using the Internet to facilitate the screen show. Either the full screen can be viewed or the currently focused window on screen.

The software comprises of a small taskbar client program and a web system based on ASP.NET for running the server side.

### **1.1 Benefits of Screensee**

Benefits of the product to use commercially or privately are listed below:

- The software is simple to use and Clients connect via a standard browser
- Affordable
- Cost Savings
- Sales Boost
- Productivity Increase
- Reduces Company Travel Requirements
- Quick and Easy Communication with colleagues, clients and suppliers

### **1.2 Features of Screensee**

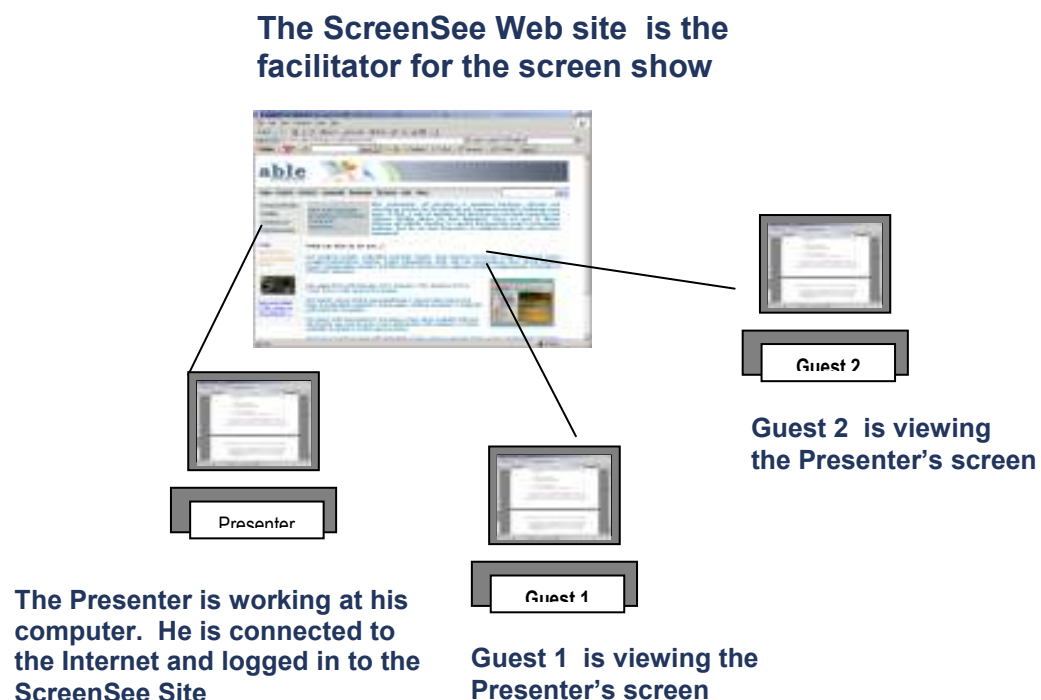
Some Features of the product are:

- Screen shows can be recorded and played back to community members at any time
- Flicker free browser display
- Automatic desktop snaps via timer

- Variable Image compression
- You can view the active window or the full screen

Clients will register as members and designate one or more client administrators to act as a moderator. The moderator creates the screen show definition, gives it a name in the private area set up for the community and then all members of the community can view the screen show. The following diagram shows a typical community.

### Screen Show Community



All users will be required to log in to the system and will have access to data which has been made available to them.

## 1.3 Applications For Screensee

Applications for Screen See are as follows:

- Live Presentation Delivery with playback ability
- Remote Monitoring of Processes
- Remote Display of Desktop Applications
- Classroom or Remote Training

- Product Demonstration
- Sales Demonstrations

## 2 INSTALLING SCREENSEE

You can install screensee from the able technologies web site and instructions are shown below:

<http://www.able-technologies.co.uk>

From the Abel Home page:

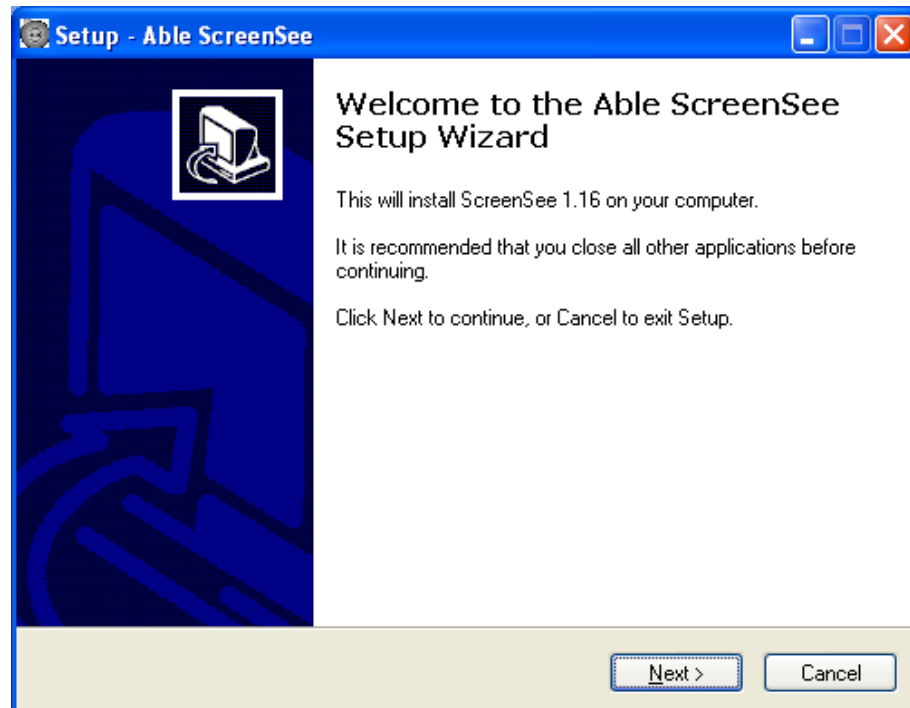
**Click: ScreenSee Free Trial**



To install the ScreenSee client on your PC allowing you to give presentations follow the instructions below:

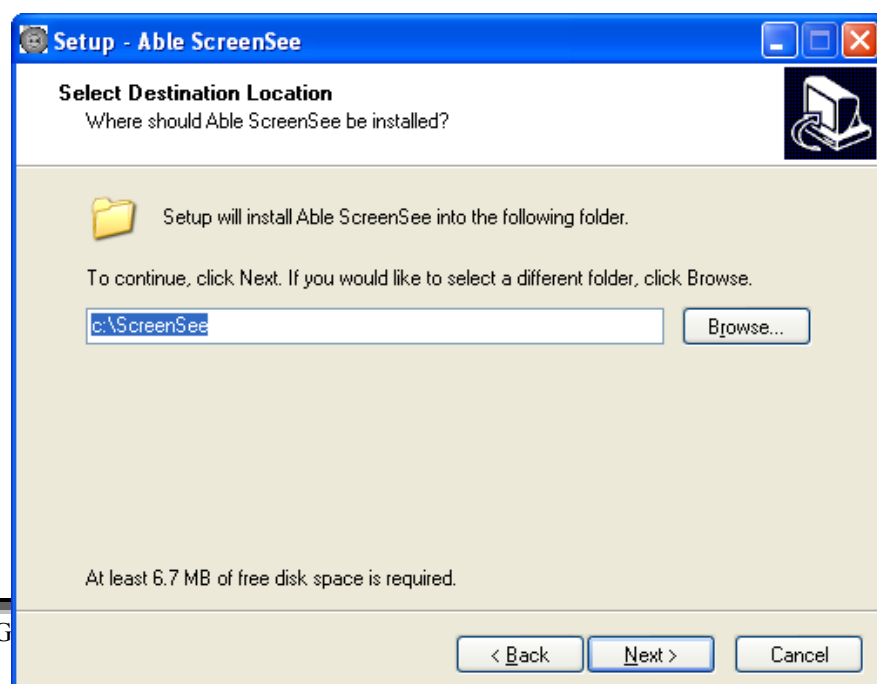


**Click: Run**



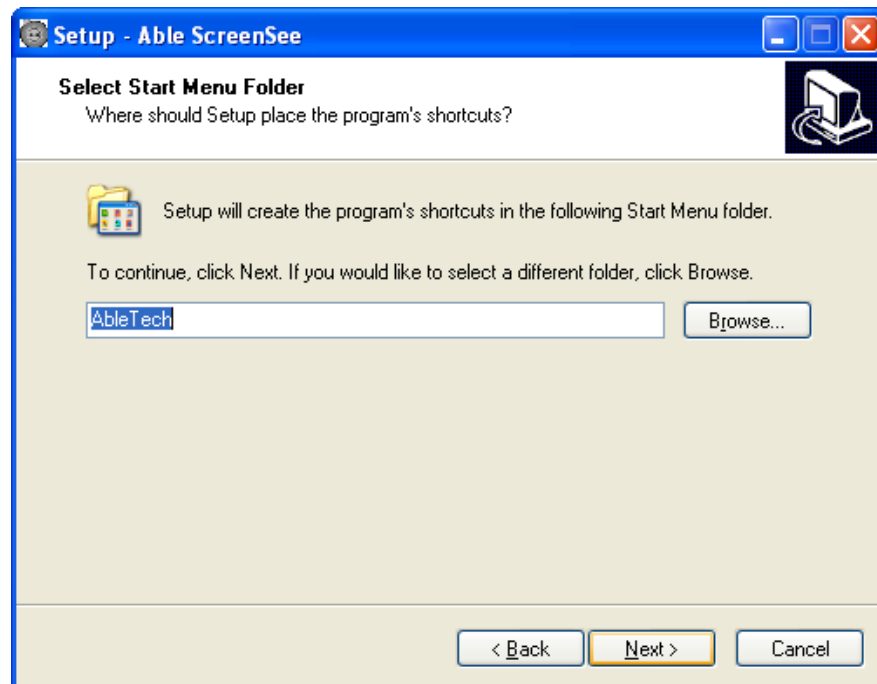
**Click: Next**

Define the destination location where screen see will be installed. The default is C:\ScreenSee

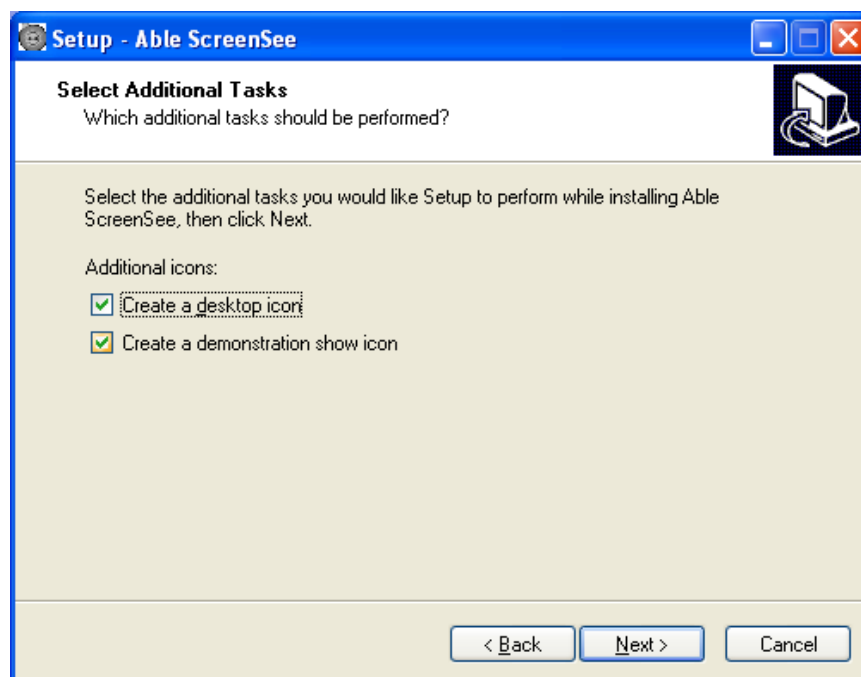


**Click:        Next**

Define the folder for the programs shortcuts. It will default to AbleTech but you can change this if required.

**Click:        Next**

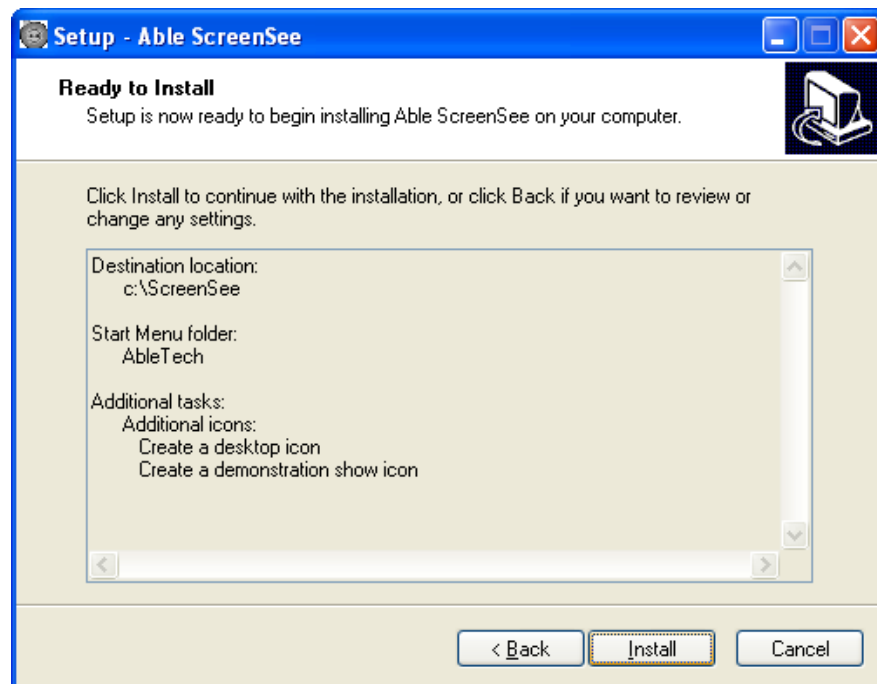
Indicate the additional tasks that you would like Setup to perform. You can choose to create a desktop icon and/or create a demonstration show icon.



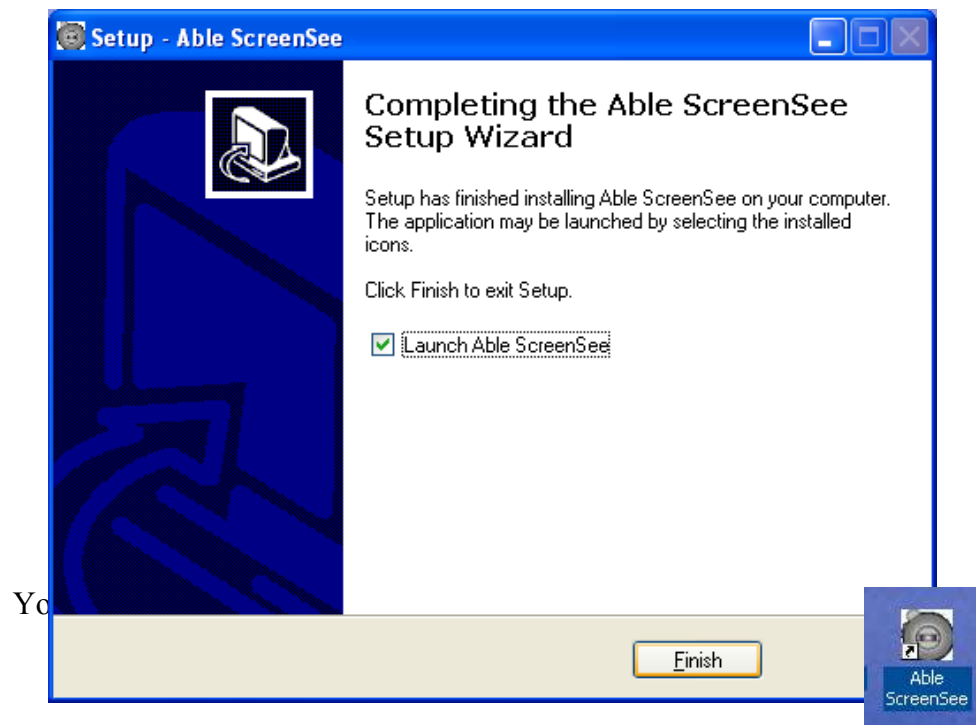


**Click:       Next**

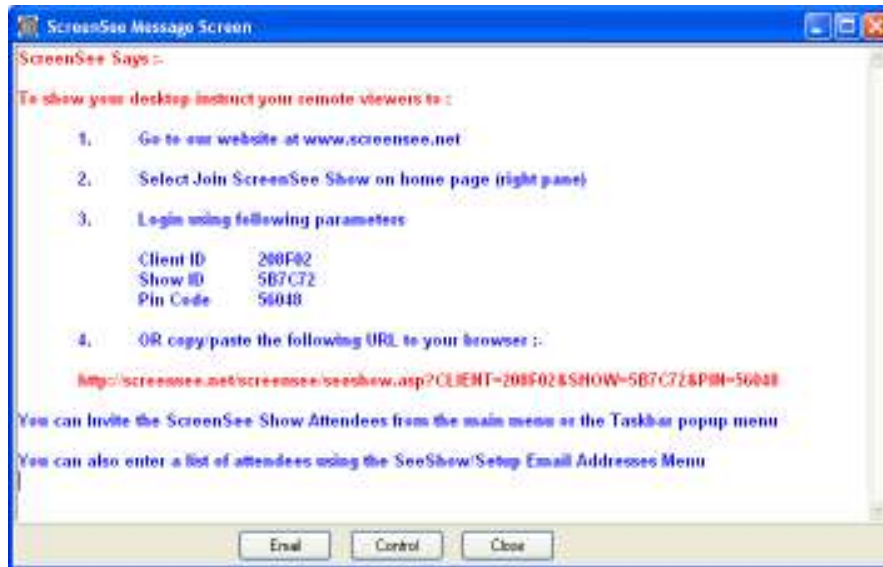
Setup is now ready to install ScreenSee and will show you the set up options you have selected. To change any option use the Back button.

**Click:       Install**

ScreenSee will be installed.



Also the following information screen will instruct you how to let remote guests view your desktop.



### 3 RUNNING A SCREEN SHOW

Screen shows are facilitated from the Able Web Site and for invited guests to view a screen show a presenter will have already configured the show and informed the guests.

Once the client software is installed on the PC of the Presenter the guests can view a screen show that has previously been set up and run by the designated presenter or they can join a live show. Shows that have been recorded and saved to the Able Web Site can then be re-run at any time by any guest member.

<http://www.able-technologies.co.uk>

#### 3.1 Setting up the Show – Presenter Action

The presenter will set up and run the show and then guest members can join the show.

To use ScreenSee:

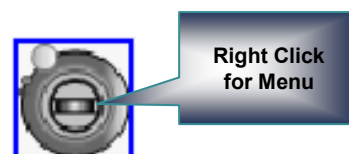
**Click:** the Able screenSee icon on your desktop



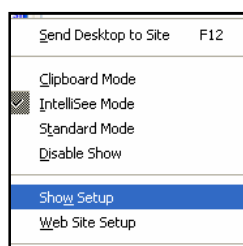
This action will load ScreenSee on your taskbar.

To run a show:

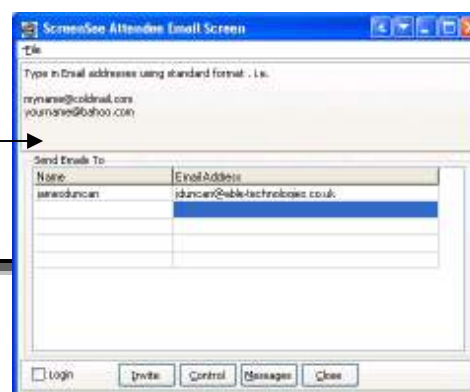
**Right Click:** the ScreenSee icon on your Taskbar



**Select:** Show Setup from the Menu



**Select:** Email  
Invite Attendees to Show



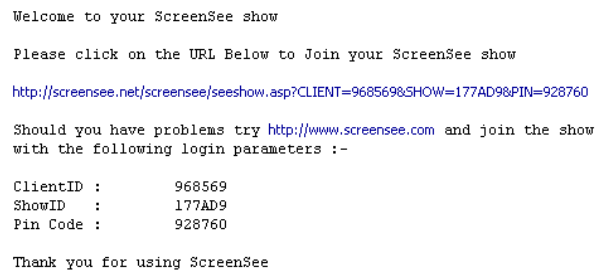
**Input:** names and email addresses of the guests

**Select:**

A rectangular button with a thin blue border and a light beige background. The word "Invite" is centered in a blue, sans-serif font.

Your invited guests will receive an invitation via email. It will look similar to the following email message.

Guests sin

A rectangular box with a thin grey border containing text that mimics an email invitation. The text is left-aligned and includes a welcome message, a URL to join a ScreenSee show, a fallback URL, login parameters, and a thank you note.

```
Welcome to your ScreenSee show

Please click on the URL Below to Join your ScreenSee show

http://screensee.net/screensee/seeshow.asp?CLIENT=968569&SHOW=177AD9&PIN=928760

Should you have problems try http://www.screensee.com and join the show
with the following login parameters :-

ClientID :      968569
ShowID   :      177AD9
Pin Code  :      928760

Thank you for using ScreenSee
```

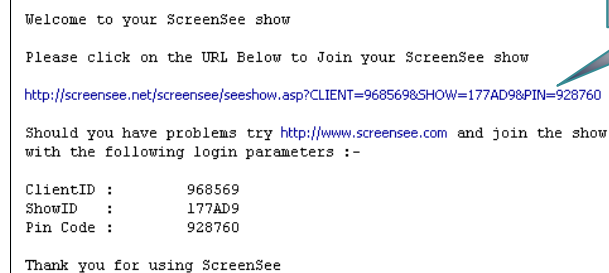
## 4 JOINING A SHOW

To join a show no software is required on your PC apart from a standard web browser such as Internet Explorer. There are two ways you can join a show and they are explained below.

### 4.1 Email Option

To allow you to join a show your Presenter will send you an email. The email will contain a URL which will log you into the show using the details shown below.

To allow you to join a show your  
Presenter will send you an email



Welcome to your ScreenSee show

Please click on the URL Below to Join your ScreenSee show

<http://screensee.net/screensee/seeshow.asp?CLIENT=968569&SHOW=177AD9&PIN=928760>

Should you have problems try <http://www.screensee.com> and join the show with the following login parameters :-

ClientID : 968569  
ShowID : 177AD9  
Pin Code : 928760

Thank you for using ScreenSee

Select to join a  
show

This URL will  
automatically log  
you in to the show  
using the details  
shown here

You will now be viewing your presenter's PC.

## 4.2 Website Option

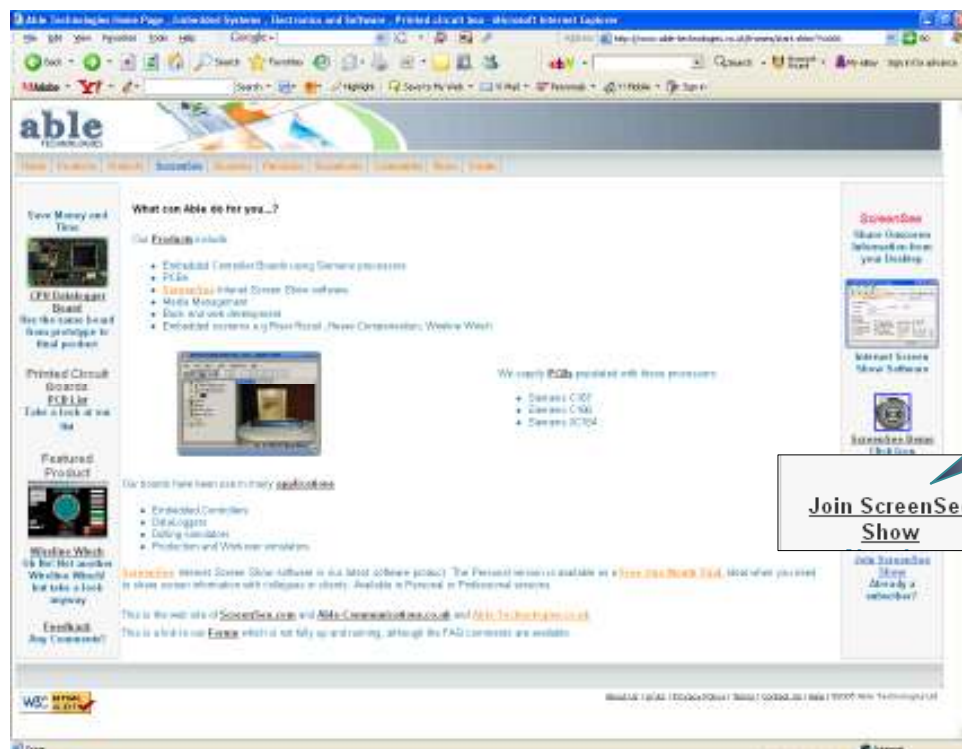
You can join a Screen Show from the Able Web site as long as you have the following information:

Logging in to ScreenSee	
Client Code	Usually your company name
ScreenSee presentation name	A name given to you by your moderator
Pincode for the presentation.	An 8 digit number. For example 19970003

If you do not have this information then you should contact your ScreenSee Presenter.

To join the show connect to the Able Web Site:

<http://www.able-technologies.co.uk>

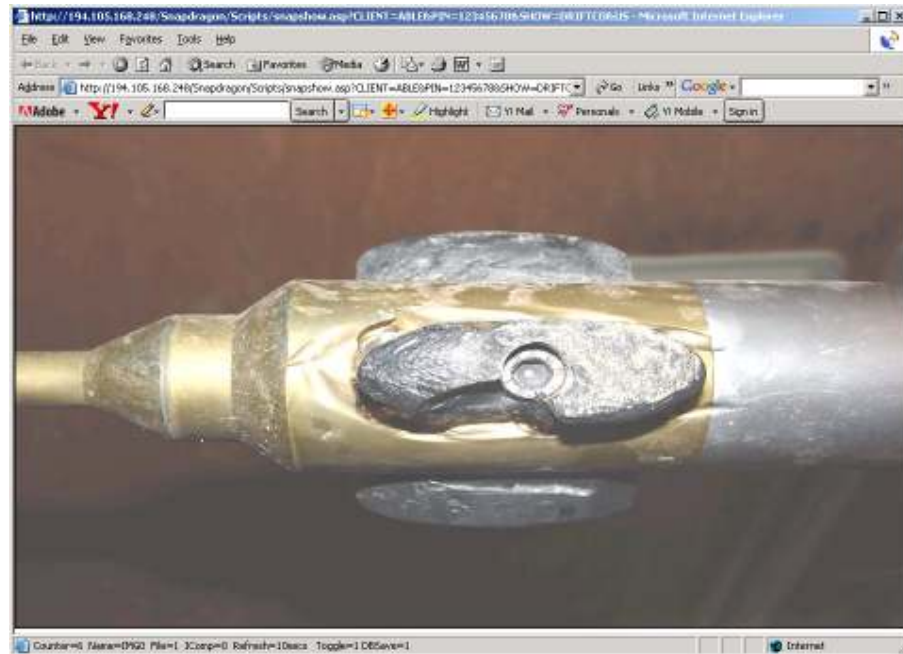


You must now login to the show by completing the Client Code name and Pin code provided to you by your presenter.

Join a SnapShow Here		
Client Code	<input type="text"/>	Forgot Your Pin Code?
ScreenSee Name	<input type="text"/>	Problems Signing in?
ScreenSee Pin Code	<input type="text"/>	Invalid Login
Join ScreenSee		

**Select:            Join ScreenSee**

You will now be viewing your Presenter's Desktop.



## 5      **SAMPLE SCREEN SHOW**

To view an existing ScreenSee on one of our machines use the login ABLE/SERVER/19970003 to view the screen.

## 6      **USING SCREENSEE**

ScreenSee usage and configuration options are listed below giving the Presenter control of running the show. The software has to be physically loaded in the presenter PC and is visible in the toolbar so it cannot be used as a spyware tool without the user being aware of its presence. Remember that it is only the Presenter who has the software loaded on his PC and these set up options are only available to the Presenter.

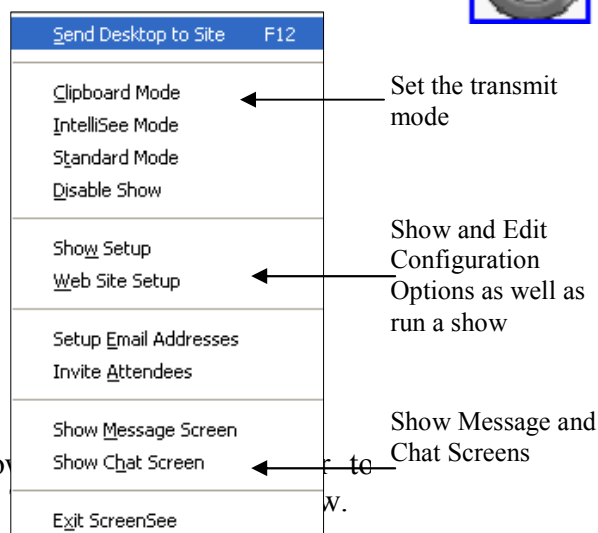
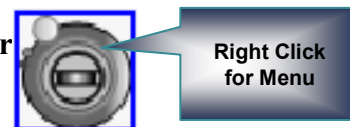
To use ScreenSee:

**Click:            the Able screenSee icon on your desktop**



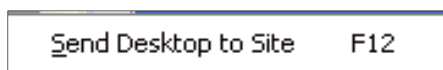
This action will load ScreenSee on your taskbar.

**Right Click: the ScreenSee icon on your Taskbar**



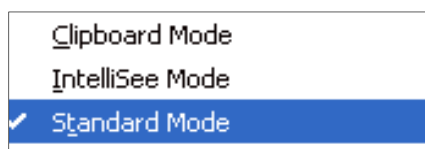
The menu options show ScreenSee to run shows.

## 6.1 Send Desktop To Site

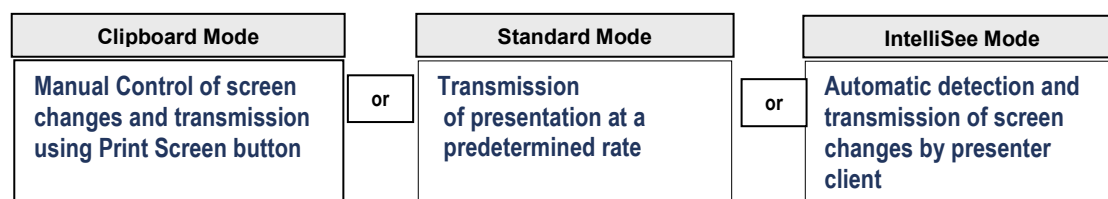


The F12 key allows the Presenter to manually transmit his desktop to the guests

## 6.2 Mode



The mode option allows the presenter to control how often screen changes are transmitted to the guests. ScreenSee has 3 modes of operation:

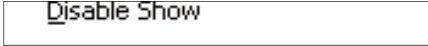


Clipboard mode only transmits the screen when you press the Print Screen key, Standard Mode transmits at a pre-determined rate irrespective of screen changes. The most efficient mode automatically detects screen changes and transmits to the guests.

The currently selected mode is indicated by a tick.



### 6.3 Disable Show

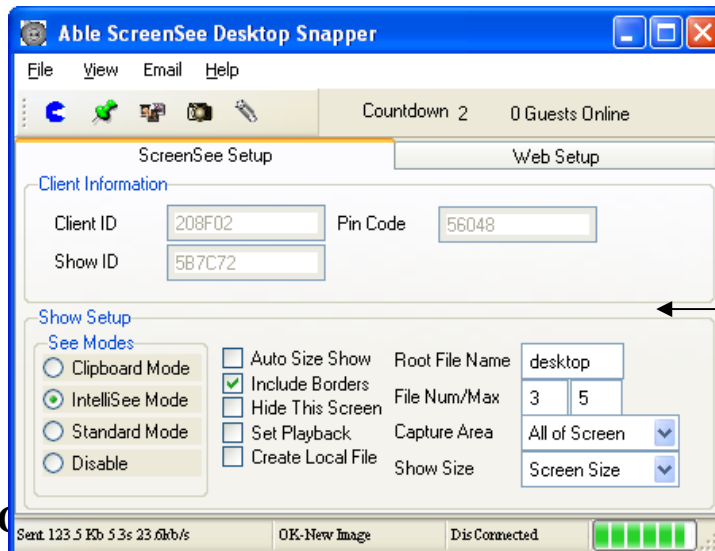
A screenshot of a software interface showing a button labeled "Disable Show". The button is rectangular with a thin black border and the text is centered within it.

This option disables the snow and stops all guests viewing your desktop.

## 6.4 Show Setup

Show Setup

The Show Setup option allows the Presenter to View and edit the configuration and invite guests to the show.



ScreenSee  
setup options

### 6.4.1 Client Information

The client information allows your guests to access your show.

Client Information		
Client ID	<input type="text" value="208F02"/>	Pin Code <input type="text" value="56048"/>
Show ID	<input type="text" value="5B7C72"/>	

Logging in to ScreenSee	
Client ID	The Client ID is the code used to identify your company in the ScreenSee environment Usually your company name
Show ID	This is the name of the ScreenSee presentation you are currently the Presenter of. If you have rights to create remote files on the server then the files are uploaded to a folder clientname/showname.
Pin Code	Pin Code is your password to the system.

### 6.4.2 Show Setup

Show Setup options are explained below:

Show Setup		
See Modes		
<input type="radio"/> Clipboard Mode	<input type="checkbox"/> Auto Size Show	Root File Name <input type="text" value="desktop"/>
<input checked="" type="radio"/> IntelliSee Mode	<input checked="" type="checkbox"/> Include Borders	File Num/Max <input type="text" value="2"/> <input type="text" value="5"/>
<input type="radio"/> Standard Mode	<input type="checkbox"/> Hide This Screen	Capture Area <input type="text" value="All of Screen"/>
<input type="radio"/> Disable	<input type="checkbox"/> Set Playback	Show Size <input type="text" value="Screen Size"/>
	<input type="checkbox"/> Create Local File	

Configuration options can be viewed and edited by selecting the Setup Show option.

### 6.4.3 Root File Name

This defines how the server images are stored . For files on the server they are named with the name entered plus an increasing numeric addition before the file extension.

On the example shown the current active file is desktop7.jpg. The number to the right of the file is the maximum file count and is usually set to none. Using multiple files prevents the possibility that the remote viewer can be trying to read an image that has just been deleted.

### 6.4.4 Capture area

Either the whole screen is sent (All of Screen) or the Active window is sent . The active window is the application that has windows focus.

### 6.4.5 Check Boxes

The check boxes to the right of the screen have the following function.

Check Boxes	
Auto Size Show	
Include Borders	If this is unchecked then the screen or application is sent without the surrounding border bars.
Manual Send	If this is checked then to have to press the camera icon to send the image manually. The software will not automatically send any images to the server.
Hide this screen.	If you want to keep this form on screen but not have it show up in the image then check this box.
Set Playback.	This sets the client viewer up to automatically increment the image number after the refresh time expires. It is basically a playback mode.
Create Local file.	This stores the file desktop.jpg or whatever extension is setup to the local ScreenSee folder for diagnostic purposes.

## 6.5 Web Site Setup

Web Site Setup

Web site options control how your browser operates. It configures the remote server location and your internal proxy server settings.

Web setup  
options

The screenshot shows the 'Able ScreenSee Desktop Snapper' application window. The 'Web Setup' tab is selected, displaying the following configuration options:

- Image Information:**
  - Browser Refresh Time: 5
  - Image Upload Time(s): 8
  - Image File Type: JPG (dropdown menu)
  - Compression Quality%: 35
- Proxy Server Setup:**
  - Proxy IP: [empty text box]
  - Proxy User ID: [empty text box]
  - Proxy Port: 0
  - Proxy Password: [empty text box]
  - ☐ Use Proxy
  - ☐ Auto Detect
- Web Information:**
  - Site IP: screenssee.net
  - Timeout (s): 5

At the bottom of the window, there is a status bar with the following text: 'Sent: 0.0 Kb 0.0s 0.0kb/s', 'Sending Image', and 'Socket Error ...'.

Options are explained below:

### **6.5.1 Compression Quality**

This is for jpeg and png format files only and is the amount of compression that the file is subject to before sending to server. The range is from 1(low quality) to 100(highest quality). Unless you have enough bandwidth to send large files quickly then this should be set to keep the image file size at around 100kbytes.

### **6.5.2 Browser Refresh Time.**

This is the time that the remote viewer browser refreshes the image and is in seconds.

### **6.5.3 Image File type**

The following file types are supported.

JPEG, PNG, BMP and GIF.

If you use BMP formats then expect a large amount of data to be sent to the server. This is obviously the highest quality but the slowest speed.

### **6.5.4 ScreenSee Site Address**

The Site IP is the IP address of the remote server . The Able server is screensee.net. You must have access rights to the server to use this.

### **6.5.5 Proxy Server Setup**

If your internal network uses a proxy server then you may need to setup IP address and port. Sometimes a login name and password will be required.

The use Proxy checkbox will try and use this option if checked.

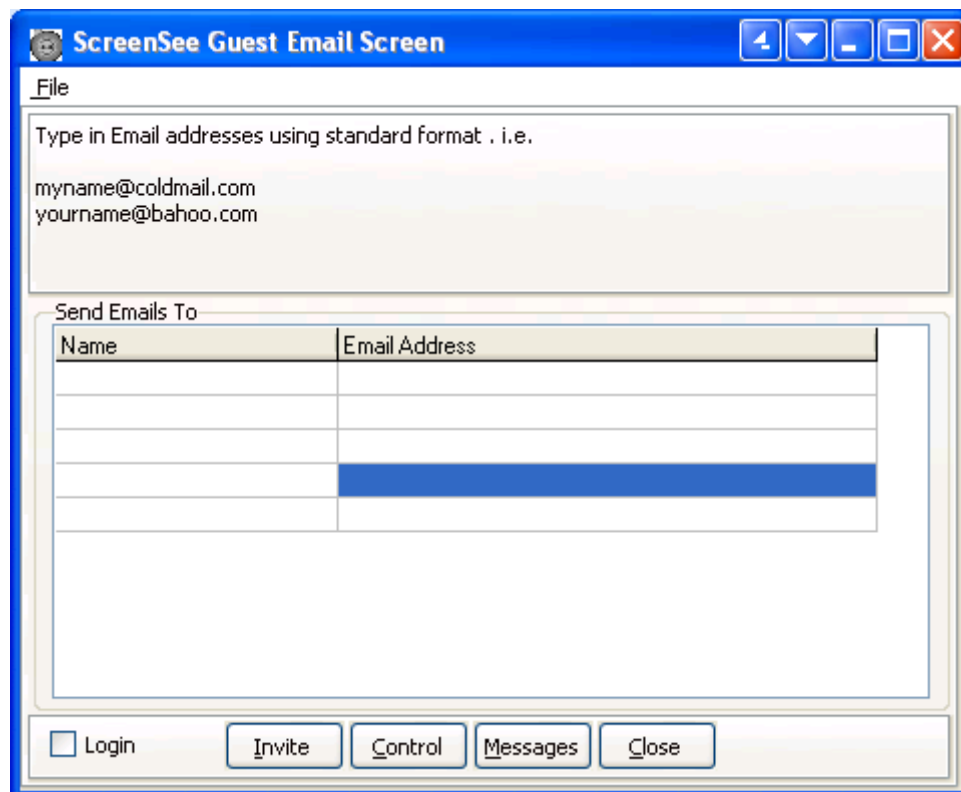
The auto detect mode will try and detect your proxy server automatically.

### **6.5.6 Timeout**

Timeout is the time the system will try to connect for and should be less than the Refresh rate.

## 6.6 Set Up Email Addresses

Setup Email Addresses



Your invited guests will receive an invitation via email. It will look similar to the following email message.

Guests sim

```
Welcome to your ScreenSee show

Please click on the URL Below to Join your ScreenSee show

http://screensee.net/screensee/seeshow.asp?CLIENT=968569&SHOW=177AD9&PIN=928760

Should you have problems try http://www.screensee.com and join the show
with the following login parameters :-

ClientID :      968569
ShowID   :      177AD9
Pin Code  :      928760

Thank you for using ScreenSee
```